



Veeam CC

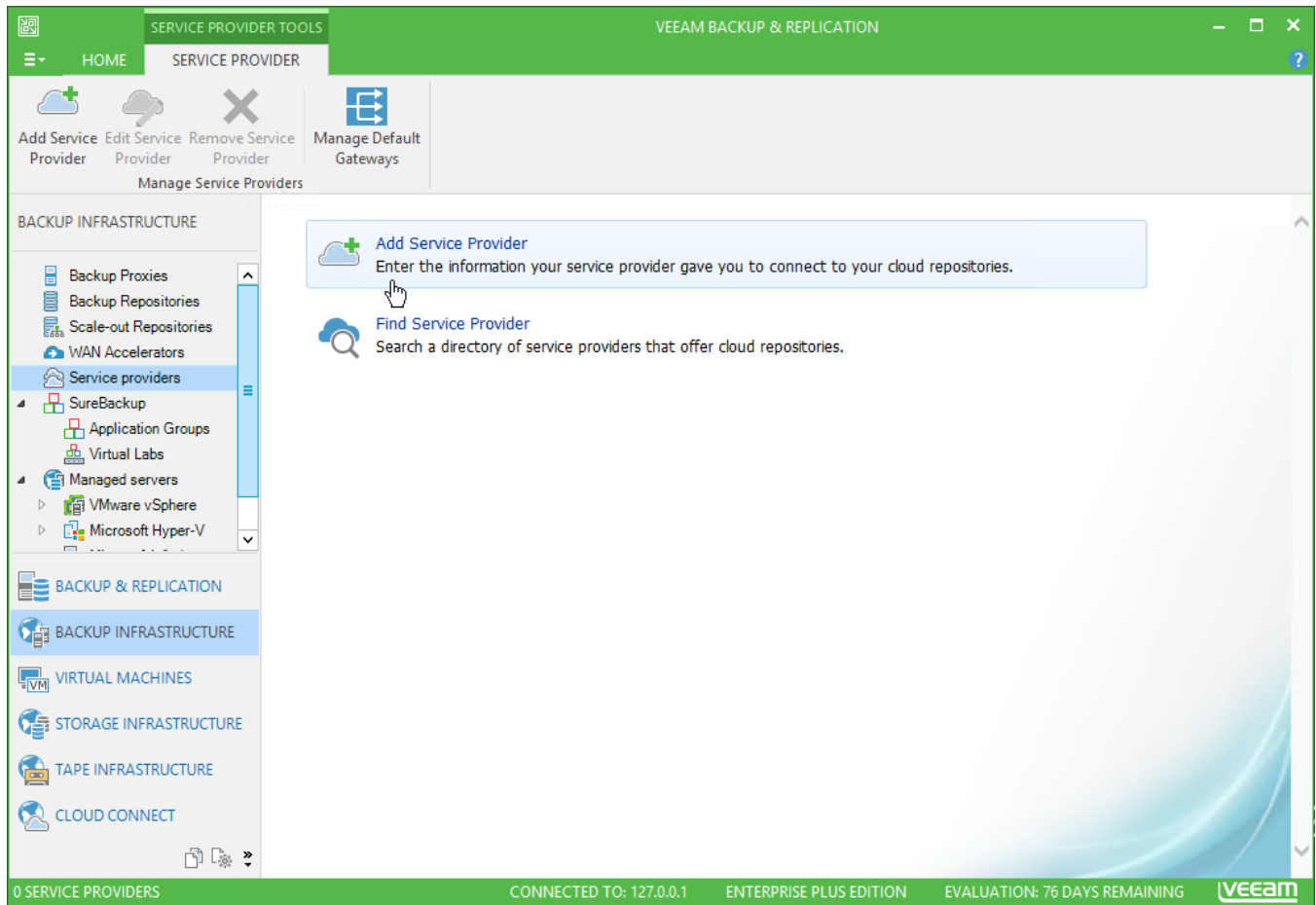
Quick Reference Guide

Adding Evolve IP as your Service Provider

Launch Service Provider Wizard

To launch the Service Provider wizard, do one of the following:

- Open the Backup Infrastructure view. Select the Service providers node in the inventory pane and click Add Service Provider on the ribbon.
- Open the Backup Infrastructure view. Right-click the Service providers node in the inventory pane and select Add service provider.
- Open the Backup Infrastructure view. Select the Service Providers node in the inventory pane and click Add Service Provider in the working area.



Specify Cloud Gateway Settings

At the Service Provider step of the wizard, specify settings for the cloud gateway that EvolveIP has provided to you.

1. In the Name field, enter the URL provided to you by EvolveIP:
 - a. vcc-east.evolveip.net
 - b. vcc-west.evolveip.net

2. In the Description field, provide a description.
3. In the Port field, leave the default port 6180.
4. Select the Allow this Veeam Backup & Replication installation to be managed by the service provider checkbox.
 - a. Currently this is not configured, but will aid in reporting for future releases.

Service Provider

Type in DNS name or IP address and a port number received from the service provider. If you are using more than one service provider, add a custom description to more easily distinguish between them.

Service Provider | DNS name or IP address: vcc-east.evolveip.net

Credentials | Description: EvolveIP Cloud Repository

Apply | Port: 6180

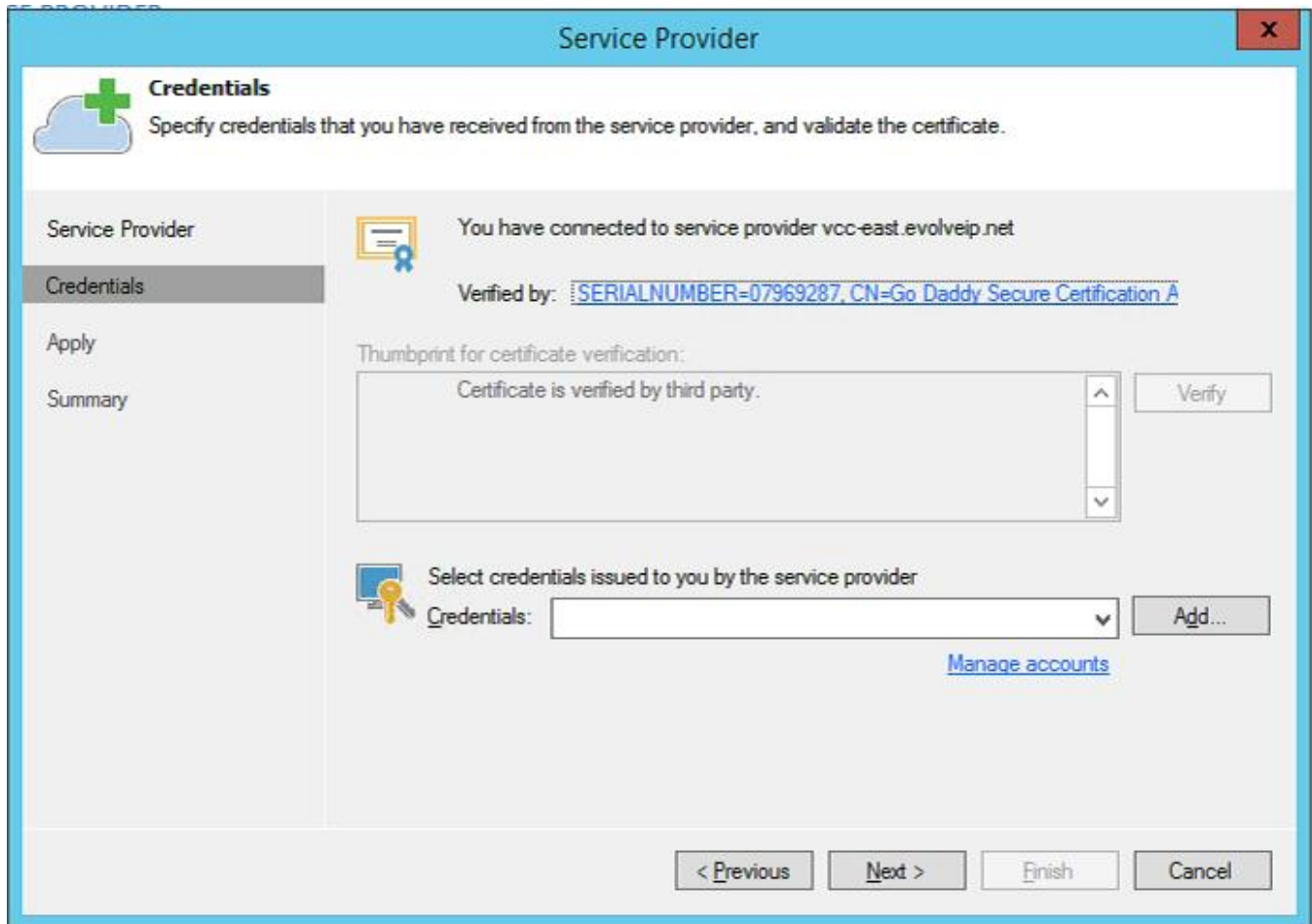
Summary | Allow this Veeam Backup & Replication installation to be managed by the service provider
Select this check box if you have managed backup contract with the service provider you are adding, and want to allow it to manage your installation remotely.

< Previous | Next > | Finish | Cancel

Verify SSL Certificate and Specify User Account Settings

At the Credentials step of the wizard, verify SSL certificate settings and specify settings for the tenant account that you want to use to connect to EvolveIP.

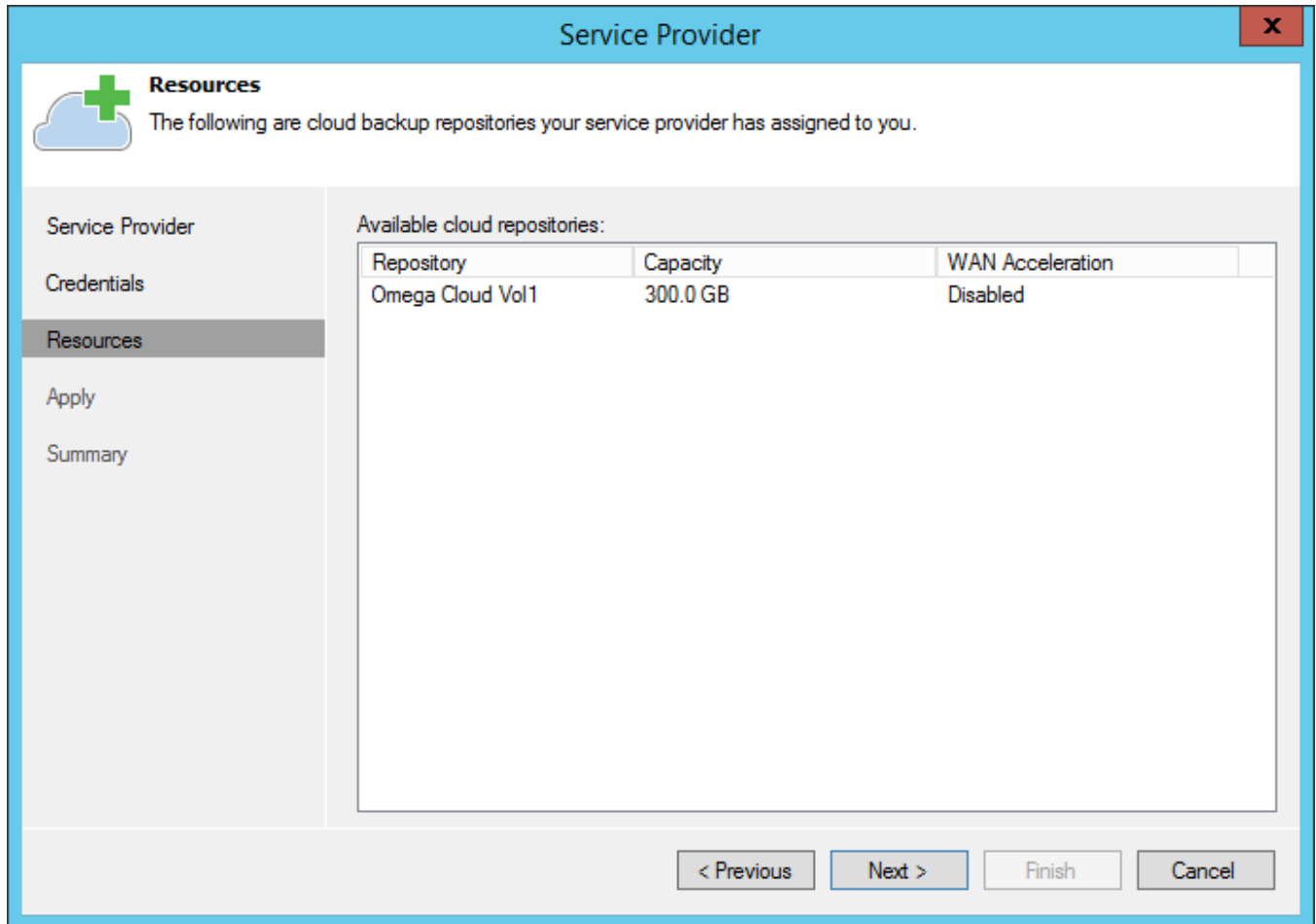
1. At the top of the wizard window, Veeam Backup & Replication displays information about the SSL certificate obtained from the SP side. You can view the certificate settings and verify the SSL certificate.
 - To view the SSL certificate, click the certificate link.
1. From the Credentials list, select credentials for the tenant account that EvolveIP has provided to you. If you have not set up credentials beforehand, click the Manage accounts link or click Add on the right to add necessary credentials.



Enumerate Cloud Repository Resources

At the Resources step of the wizard, Veeam Backup & Replication will automatically enumerate resources provided by EvolveIP and display the results in the wizard window.

Enumeration of storage resources on the cloud repository may take some time. Wait for the processing to complete and click Next.



Asses Results

At the Apply step of the wizard, Veeam Backup & Replication will save information about resources available from EvolveIP. Wait for the required operations to complete and click Next to continue.

Finish Working With Wizard

At the Summary step of the wizard, complete the procedure of SP adding.

1. Review the configuration information on the added SP.
2. Click Finish to exit the wizard.