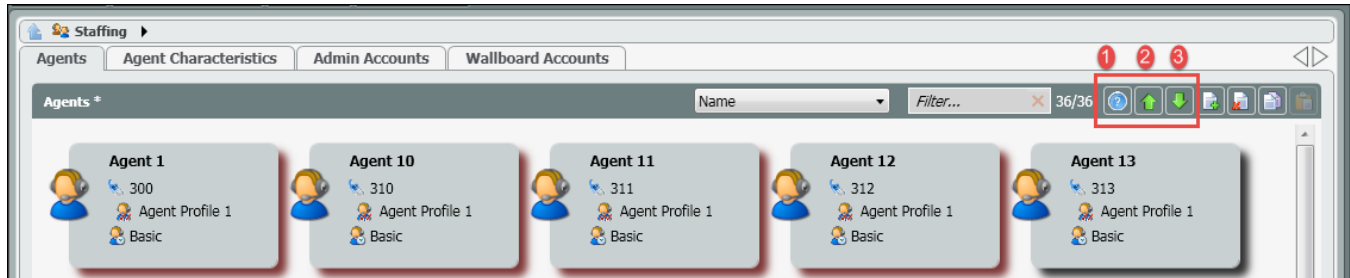


# ECS Setup: Staffing - Agent Management via Bulk Upload

- [Agent Management via Bulk Upload](#)
- [How to Edit and Create Agents](#)

## Agent Management via Bulk Upload

Agent management via bulk upload allows for the creation and modification of one or multiple agents including skills, passwords, load allowance and agent characteristics within the staffing tab of the Setup Client. The bulk upload also allows for the creation and assignment of new skills without needing to first add them to skilling tab under the Implementation subsystem or within an agent profile.



1. **Upload Help Content** – provides a brief description of the export/import functionality
2. **Export File** – export the selected agents and save as a .csv file
3. **Import File** – import a saved .csv file to add or modify agents

When exporting a file it will automatically create a .csv file with the first line of the file as the header and the second line as an agent sample. The header and sample lines cannot be edited. For an example of the exported file [click here](#).

The following fields are included on the exported file:

- **Account Name** – Mandatory Field: example: ECS\plab.LizFox
- **Agent Name** – Name of existing or new agent. Mandatory Field
- **Extension** – extension assigned or to be assigned to a new agent. Not a mandatory field to import the file, but an extension will need to be provided to the agent before deploying any changes.
- **Agent Availability Type** – Regular Agent will always be the availability type and can be copied and pasted next to all new and existing agents.
- **Default Phone** – the default phone type will depend on whether your solution is Unified or Overlay. If Overlay InternalPhone should be used and if Unified HPBXPhone
- **Auto Answer Interaction Media Types** – Set the media type which will utilize auto answer. Telephony, Email, Chat, Fax, SMS.
- **Auto Answer Telephony Interaction Delay** – Set the auto answer delay for Telephony interactions.
- **Default Load Allowance** – will show the current default load allowance being utilized by the agent when handling interactions. However, if other load allowances have been created and assigned to the agent, a different default load allowance can be assigned to the agent or newly created agent.
- **Profiles** – Agent Skill Profiles are created and generally assigned to agents in the Agent Characteristics tab. Each profile is made up of a set of skills and level of proficiency that is assigned to each agent. Agents can be assigned to more than one profile. When assigning multiple profiles to an agent, the file entry should look like the following example: Profile1;Profile2. Each profile should be separated by a (;) with no spaces in between. Profiles are not Mandatory. Agents can be assigned individual skills under the 'Skill' column within the .csv file
- **Available Load Allowances** – an agent can be assigned to one or multiple load allowances. When assigning multiple load allowances to an agent, the file entry should look like the following example: Basic;Advanced;ChatOnly. Each load allowance should be separated by a (;) with no spaces in between.
- **Private Telephones** – telephone number needed when utilizing Private Phone as the default phone type for the agent. The phone number needs to be a ten digit telephone number.
- **HPBX User** – Only utilized in a Unified solution. This userID is the agent's broadsoftID and would be provided by your Project Manager.
- **Hang Up Line After each call** – Mandatory Field. The entry found in the example field should be copied and pasted for all newly created and existing agents.
- **Email Address** – email address for an agent, but is not a mandatory field.
- **Always Recorded** – this will apply only to Overlay solutions. This will be enabled if the current ECS setup is an overlay solution and the agents are to be setup with call recording. ECS has an entirely different call recording platform for the ECS Unified solution. If call recording needs to be enabled for an agent it should be set to Yes, if disabled it should be set to No.
- **Change Extension** – gives the agent the ability to change their extension or endpoint where they wish to receive calls. Set this field to True if the agent should be able to change their extension or False if this option should be disabled.
- **CRM** – internal ECS contact manager functionality that allows agents to manage contact information and provides a full detail contact history of all the touches the customer has had with the organization. If the CRM needs to be enabled for an agent it should be set to Enabled, if disabled it should be set to Disabled.
- **Delegate to Supervisor** – allows agents to delegate an interaction to a supervisor. When the interaction is delegated it will show up in the Supervisor client, indicating they have a new delegation. If delegating to a supervisor needs to be enabled for an agent it should be set to True, if disabled it should be set to False.
- **Skills** – agents can be assigned individual skills and proficiency's without needing to be assigned a (skill) profile. Skills can be assigned from already existing skills [added under the Implementation tab](#) or new skills can be created by adding and importing them through the .csv

file. Whether assigning existing or creating and assigning new skills the file entry should look like the following example: Spanish|High; Sales|Medium;English|High. It should first contain the Skill followed by (|) followed by the proficiency level (Spanish|High) with no spaces in between. If more than one skill needs to be added to the agent each skill|proficiency should be separated by a (;) with no spaces in between.

- **Chat Private Greeting** – the chat private greeting must first be manually setup for one agent before having the capability to set it up via the upload for other agents. Once one agent has been setup with the proper chat phrase within the agents profile, the agents Account Name (ex. AIRELAB\plab.LizFox) can be inserted into the file next to all the other agents that should have Chat Private Greeting setup.
- **Voicemail** – the email and voicemail greeting must first be manually setup for one agent before having the capability to set it up via the upload for other agents. Once one agent has been setup with the proper email and voicemail greeting within the agents profile, the agents Account Name (ex. AIRELAB\plab.LizFox) can be inserted into the file next to all the other agents that should have voicemail setup.
  - Example: Agent 1 has Chat Private Greeting and Voicemail setup in their profile. Select all the agents you wish to export to assign the chat and voicemail services. On export the Chat Private Greeting and Voicemail columns will always be empty within the .csv file. Copy and past the agents Account Name that has the Chat Private Greeting and Voicemail services already assigned next to all the other agents that should be setup with the same chat private greeting and voicemail settings.

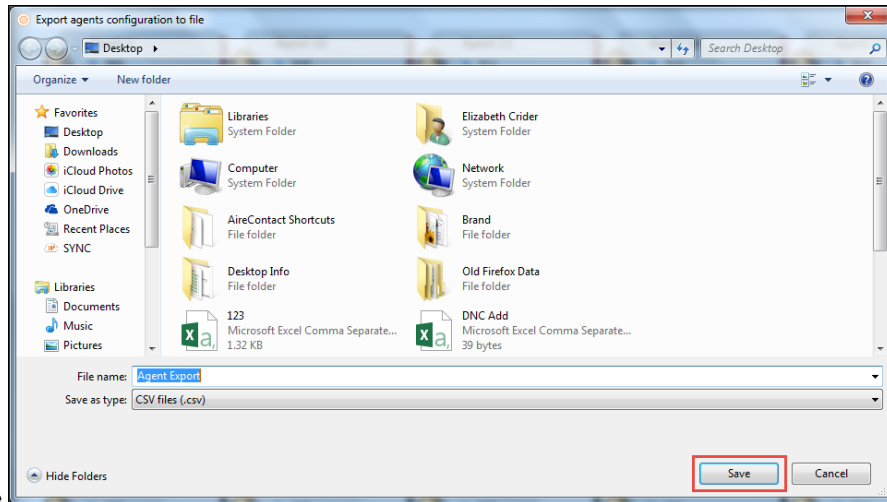
	A	B	L	M	N	O	P	Q	R	S	T	U	V
1	Account Name	Agent Nar	Hang Up L	Email Add	Always re	Change Ex	CRM	Delegate	Skills	Chat Private Greeting	Voice Mail	Password	
2	ECS\Org.AgentAccount	SampleAg	InternalPh	MrBurns@	Yes	TRUE	Enabled	TRUE	Spanish	ECS\Org.OtherAgentAccount	ECS\Org.OtherAgentAccount	MyPassword	
3	AIRELAB\plab.Agent1	Agent 1	InternalPhone;Priva	No		TRUE	Enabled	FALSE		AIRELAB\plab.Agent1	AIRELAB\plab.Agent1		
4	AIRELAB\plab.Agent10	Agent 10	InternalPhone;Priva	No		TRUE	Disabled	FALSE		AIRELAB\plab.Agent1	AIRELAB\plab.Agent1		
5	AIRELAB\plab.Agent11	Agent 11	InternalPhone;Priva	No		TRUE	Disabled	FALSE		AIRELAB\plab.Agent1	AIRELAB\plab.Agent1		
6	AIRELAB\plab.Agent12	Agent 12	InternalPhone;Priva	No		TRUE	Disabled	FALSE		AIRELAB\plab.Agent1	AIRELAB\plab.Agent1		
7	AIRELAB\plab.Agent13	Agent 13	InternalPhone;Priva	No		TRUE	Disabled	FALSE		AIRELAB\plab.Agent1	AIRELAB\plab.Agent1		
8	AIRELAB\plab.Agent14	Agent 14	InternalPhone;Priva	No		TRUE	Disabled	FALSE		AIRELAB\plab.Agent1	AIRELAB\plab.Agent1		
9	AIRELAB\plab.Agent15	Agent 15	InternalPhone;Priva	No		TRUE	Disabled	FALSE		AIRELAB\plab.Agent1	AIRELAB\plab.Agent1		
10	AIRELAB\plab.Agent16	Agent 16	InternalPhone;Priva	No		TRUE	Disabled	FALSE		AIRELAB\plab.Agent1	AIRELAB\plab.Agent1		
11	AIRELAB\plab.Agent17	Agent 17	InternalPhone;Priva	No		TRUE	Disabled	FALSE		AIRELAB\plab.Agent1	AIRELAB\plab.Agent1		
12	AIRELAB\plab.Agent18	Agent 18	InternalPhone;Priva	No		TRUE	Disabled	FALSE		AIRELAB\plab.Agent1	AIRELAB\plab.Agent1		
13													

- **Agent In Business Processes** - Agents can be assigned to specific business processes as Active (True) or Inactive (False). When assigning an agent to multiple business processes a ";" should be used. (Technical Support|True;Sales|False)
- **Supervisor Of Business Processes** - Supervisors can also be assigned to specific business processes. When assigning an supervisor to multiple business processes a ";" should be used. (Technical Support;Sales)
- **Password** – (update) password is only supported for existing agents and cannot be set for new agents added to the imported file. This will allow supervisor and admins to reset an agents password if they get locked out or forget their agent client password. This field should be left blank if create a new agent, because the agents password must first be set to the agent default password.
- **HPBX Registrar User** - HPBX UserID but the @voip.evolveip.net is not needed
- **HPBX Registrar Password** - On export this field will be blank.

## How to Edit and Create Agents

1. Select the agents you wish to edit. Select Export.





2. Enter a file name. Save.
3. Locate and open the exported file.

E16																				
	A	B	C	D	E	F	G	H	I	J	K	L	M	N	O	P	Q	R	S	T
1	Account Name	Agent Name	Extention	Agent Avi	Default PI	AutoAnsv	Default Profiles	Available	Private Te	HPBX Use	Hang Up L	Email Add	Always re	Change Ex	CRM	Delegate	Skills	Chat Priv	Voice Mail	Passw
2	ECS\Org.A SampleAg	304	RegularAg	InternalPI	FALSE	Basic	Profile1:P	Basic;Adv.555434377	555343415	InternalPI	MrBurns@Yes			TRUE	Enabled	TRUE	Spanish	N\ECS\Org.C	ECS\Org.C MyPa	
3	AIRELAB\plab.Agent22	322	RegularAg	InternalPI	FALSE	Basic	Agent Pro Basic			InternalPhone:Priva	No			TRUE	Disabled	FALSE				
4	AIRELAB\plab.Agent23	323	RegularAg	InternalPI	FALSE	Basic	Agent Pro Basic			InternalPhone:Priva	No			TRUE	Disabled	FALSE				
5	AIRELAB\plab.Agent24	324	RegularAg	InternalPI	FALSE	Basic	Agent Pro Basic			InternalPhone:Priva	No			TRUE	Disabled	FALSE				
6	AIRELAB\plab.Agent25	325	RegularAg	InternalPI	FALSE	Basic	Agent Pro Basic			InternalPhone:Priva	No			TRUE	Disabled	FALSE				
7	AIRELAB\plab.Agent26	326	RegularAg	InternalPI	FALSE	Basic	Agent Pro Basic			InternalPhone:Priva	No			TRUE	Disabled	FALSE				
8	AIRELAB\plab.Agent27	327	RegularAg	InternalPI	FALSE	Basic	Agent Pro Basic			InternalPhone:Priva	No			TRUE	Disabled	FALSE				
9	AIRELAB\plab.Agent2	302	RegularAg	InternalPI	FALSE	Basic	Agent Pro Basic			InternalPhone:Priva	No			TRUE	Disabled	FALSE				
10	AIRELAB\plab.Agent20	320	RegularAg	HPBXPhor	FALSE	Basic	Agent Pro Basic			717201676	InternalPhone:Priva	No		TRUE	Enabled	FALSE				
11	AIRELAB\plab.Agent21	321	RegularAg	InternalPI	FALSE	Basic	Agent Pro Basic				InternalPhone:Priva	No		TRUE	Disabled	FALSE				
12	AIRELAB\plab.Agent14	314	RegularAg	InternalPI	FALSE	Basic	Agent Pro Basic				InternalPhone:Priva	No		TRUE	Disabled	FALSE				
13	AIRELAB\plab.Agent15	315	RegularAg	InternalPI	FALSE	Basic	Agent Pro Basic				InternalPhone:Priva	No		TRUE	Disabled	FALSE				
14																				
15																				
16																				

4. Update any existing agents following the guidelines outlined above for any True/False, Yes/No, Disabled/Enabled options. Update any additional options including but not limited to Available Load Allowance, Password update, Skills, etc

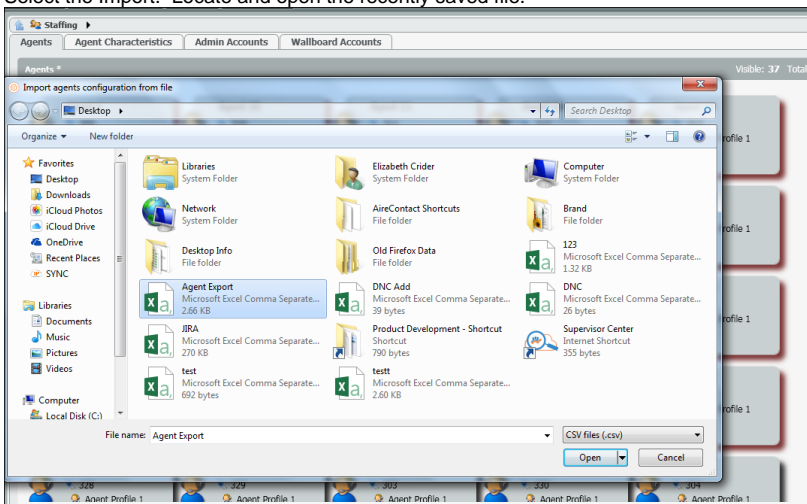
Account Name	Agent Name	Extention	Agent Avi	Default PI	AutoAnsv	Default Profiles	Available Load Allowances	Private Te	HPBX Use	Hang Up L	Email Add	Always re	Change Ex	CRM	Delegate	Skills	Chat Priv		
ECS\Org.AgentAccount	SampleAg	304	RegularAg	Internal	PI	FALSE	Basic	Profile1:P	Basic;Advanced;Custom	55543437	555343415	InternalPI	MrBurns@	Yes	TRUE	Enabled	TRUE	Spanish	N\ECS\Org.C
AIRELAB\plab.Agent22	Agent 22	322	RegularAg	Internal	PI	FALSE	Basic	Agent Pro	Basic;Advanced			InternalPhone	Priva	No	FALSE	Enabled	TRUE		
AIRELAB\plab.Agent23	Agent 23	323	RegularAg	Internal	PI	FALSE	Basic	Agent Pro	Basic			InternalPhone	Priva	No	TRUE	Disabled	FALSE		
AIRELAB\plab.Agent24	Agent 24	324	RegularAg	Internal	PI	FALSE	Basic	Agent Pro	Basic			InternalPhone	Priva	No	TRUE	Disabled	FALSE		
AIRELAB\plab.Agent25	Agent 25	325	RegularAg	Internal	PI	FALSE	Basic	Agent Pro	Basic			InternalPhone	Priva	No	TRUE	Disabled	FALSE		
AIRELAB\plab.Agent26	Agent 26	326	RegularAg	Internal	PI	FALSE	Basic	Agent Pro	Basic			InternalPhone	Priva	No	TRUE	Disabled	FALSE		
AIRELAB\plab.Agent27	Agent 27	327	RegularAg	Internal	PI	FALSE	Basic	Agent Pro	Basic			InternalPhone	Priva	No	TRUE	Disabled	FALSE		
AIRELAB\plab.Agent2	Agent 2	302	RegularAg	Internal	PI	FALSE	Basic	Agent Pro	Basic			InternalPhone	Priva	No	TRUE	Disabled	FALSE		
AIRELAB\plab.Agent20	Agent 20	320	RegularAg	HPBXPh	FALSE	Basic	Agent Pro	Basic		717201676		InternalPhone	Priva	No	TRUE	Enabled	FALSE		
AIRELAB\plab.Agent21	Agent 21	321	RegularAg	Internal	PI	FALSE	Basic	Agent Pro	Basic			InternalPhone	Priva	No	TRUE	Disabled	FALSE		
AIRELAB\plab.Agent14	Agent 14	314	RegularAg	Internal	PI	FALSE	Basic	Agent Pro	Basic			InternalPhone	Priva	No	TRUE	Disabled	FALSE		
AIRELAB\plab.Agent15	Agent 15	315	RegularAg	Internal	PI	FALSE	Basic	Agent Pro	Basic			InternalPhone	Priva	No	TRUE	Disabled	FALSE		

5. If adding a new agent, enter in the new agents information on the next available column. In the example below a new agent was created along with a brand new skill and assigned proficiency within the exported file.

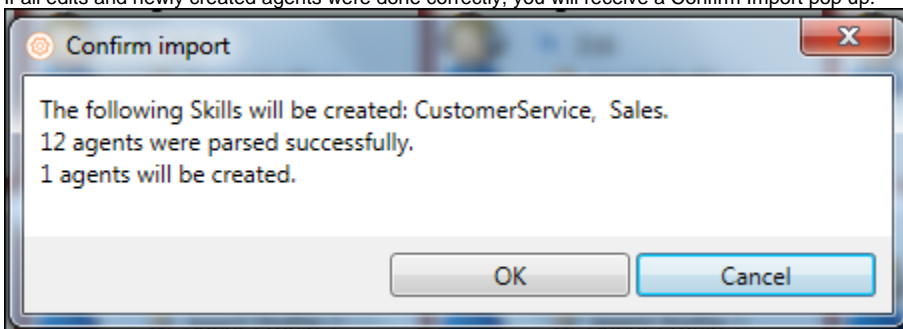
	A	B	C	D	E	F	G	H	I	J	K	L	M	N	O	P	Q	R
1	Account Name	Agent Name	Extention	Agent Avi	Default PI	AutoAnsv	Default Profiles	Available Load All	Private HPB	Hang Up L	Email Alwa	Change Ex	CRM	Delegate	Skills			
2	ECS\Org.AgentAccount	SampleAgentN	304	RegularAg	Internal	PI	FALSE	Basic	Profile1:P	Basic;Advanced;C	555434	555	Internal	MrBu	Yes	TRUE	Enabled	TRUE
3	AIRELAB\plab.Agent22	Agent 22	322	RegularAg	Internal	PI	FALSE	Basic	Agent Pro	Basic;Advanced			InternalPhone	No	FALSE	Enabled	TRUE	Spanish   Medium;Russian   High
4	AIRELAB\plab.Agent23	Agent 23	323	RegularAg	Internal	PI	FALSE	Basic	Agent Pro	Basic			InternalPhone	No	TRUE	Disabled	FALSE	
5	AIRELAB\plab.Agent24	Agent 24	324	RegularAg	Internal	PI	FALSE	Basic	Agent Pro	Basic			InternalPhone	No	TRUE	Disabled	FALSE	
6	AIRELAB\plab.Agent25	Agent 25	325	RegularAg	Internal	PI	FALSE	Basic	Agent Pro	Basic			InternalPhone	No	TRUE	Disabled	FALSE	
7	AIRELAB\plab.Agent26	Agent 26	326	RegularAg	Internal	PI	FALSE	Basic	Agent Pro	Basic			InternalPhone	No	TRUE	Disabled	FALSE	
8	AIRELAB\plab.Agent27	Agent 27	327	RegularAg	Internal	PI	FALSE	Basic	Agent Pro	Basic			InternalPhone	No	TRUE	Disabled	FALSE	
9	AIRELAB\plab.Agent20	Agent 20	320	RegularAg	HPBXPh	FALSE	Basic	Agent Pro	Basic		717	InternalPhone	No	TRUE	Enabled	FALSE		
10	AIRELAB\plab.Agent21	Agent 21	321	RegularAg	Internal	PI	FALSE	Basic	Agent Pro	Basic			InternalPhone	No	TRUE	Disabled	FALSE	
11	AIRELAB\plab.Agent14	Agent 14	314	RegularAg	Internal	PI	FALSE	Basic	Agent Pro	Basic			InternalPhone	No	TRUE	Disabled	FALSE	
12	AIRELAB\plab.Agent15	Agent 15	315	RegularAg	Internal	PI	FALSE	Basic	Agent Pro	Basic			InternalPhone	No	TRUE	Disabled	FALSE	
13	AIRELAB\plab.Agent15	Agent 15	315	RegularAg	Internal	PI	FALSE	Basic	Agent Pro	Basic			InternalPhone	No	TRUE	Disabled	FALSE	
14	AIRELAB\plab.Agent15	Agent 15	315	RegularAg	Internal	PI	FALSE	Basic	Agent Pro	Basic			InternalPhone	No	TRUE	Disabled	FALSE	
15	AIRELAB\plab.Agent15	Agent 15	315	RegularAg	Internal	PI	FALSE	Basic	Agent Pro	Basic			InternalPhone	No	FALSE	Enabled	TRUE	CustomerService   High; Sales   Medium

6. Save all changes. Exit out of the file. You cannot import a file back into the Setup Client that is currently open.

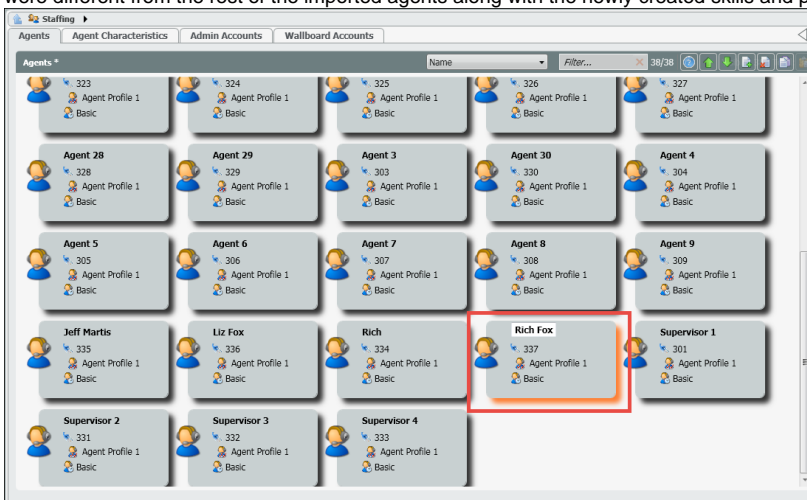
7. Select the Import. Locate and open the recently saved file.



8. If all edits and newly created agents were done correctly, you will receive a Confirm Import pop up.



9. The following screen shots show the newly created agent and the agents detailed profile. The profile highlights the agent characteristics that were different from the rest of the imported agents along with the newly created skills and proficiency's



Staffing > Rich Fox

Account Name: ajrelablab.richfox

Extension: 337

Agent Availability Type: Regular Agent

Default Phone: Internal Phone

Auto Answer Interaction: Denied

Default Load Allowance: Basic

Available Load Allowances:
 

- ☒ Advanced
- ☒ Basic
- ☐ One voice only

Hang Up Line after each Call:
 

- ☒ Internal Phone
- ☒ Private Phone
- ☒ HPBX Phone

Private Telephones:

HPBX User:

End Point: 337

Email Address:

Change Extension: Denied

Delegate To Supervisor: Allowed

CRM: Enabled

Profiles:
 

- ☒ Agent Profile 1

Skills:
 

- Selected:**
  - Customer Service
  - Sales
- Not Selected:**
  - English
  - Hebrew
  - Russian
  - Spanish
  - Customer Grade

10. The following screen shot shows the detailed profile of the existing agent, highlighting the characteristics that were updated on import.

Staffing > Agent 22

Account Name: AIRELABlab.Agent22

Extension: 322

Agent Availability Type: Regular Agent

Default Phone: Internal Phone

Auto Answer Interaction: Denied

Default Load Allowance: Basic

Available Load Allowances:
 

- ☒ Advanced
- ☒ Basic
- ☐ One voice only

Hang Up Line after each Call:
 

- ☒ Internal Phone
- ☒ Private Phone
- ☒ HPBX Phone

Private Telephones:

HPBX User:

End Point: 322

Email Address:

Change Extension: Denied

Delegate To Supervisor: Allowed

CRM: Enabled

Profiles:
 

- ☒ Agent Profile 1

Skills:
 

- Selected:**
  - Customer Service
  - Sales
- Not Selected:**
  - English
  - Hebrew
  - Russian
  - Spanish
  - Customer Grade

11. Deploy Changes

NOTE: The following fields must be unique when importing a file. If there are any duplicates, the import will fail.

- Account Name
- Agent Name
- Extension
- Private Telephone
- HPBX User