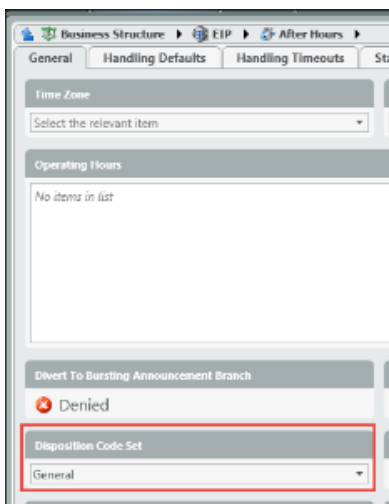
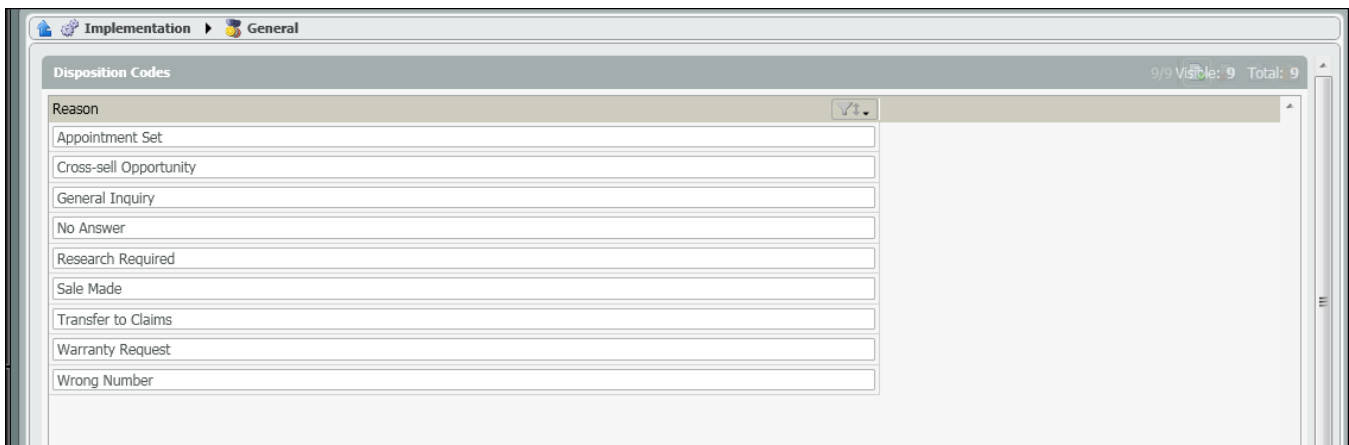
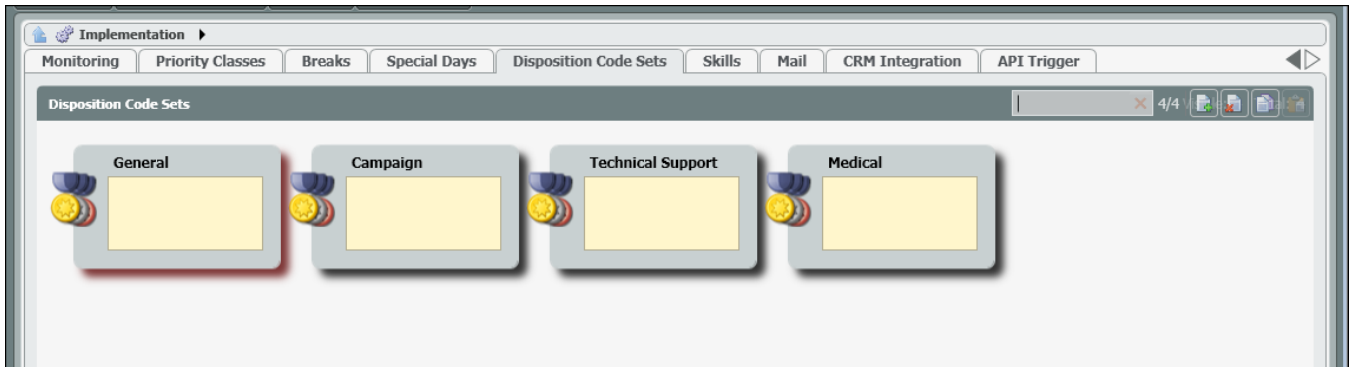


ECS Setup: Implementation - Disposition Code Sets

Implementation: Disposition Code Sets

Disposition Codes are made up of a single category and subsets of that category. The top level category is assigned at the Business Process level. The subcategories will appear to the agent when assigning a disposition code to an interaction, depending on their selection.

- [Adding a New Disposition Code Set](#)
- [Adding a Disposition Code Set to a Business Process](#)
- [Deleting a Disposition Code Set or Code](#)
- [Making Dispositions Mandatory](#)
 - [Agent View](#)

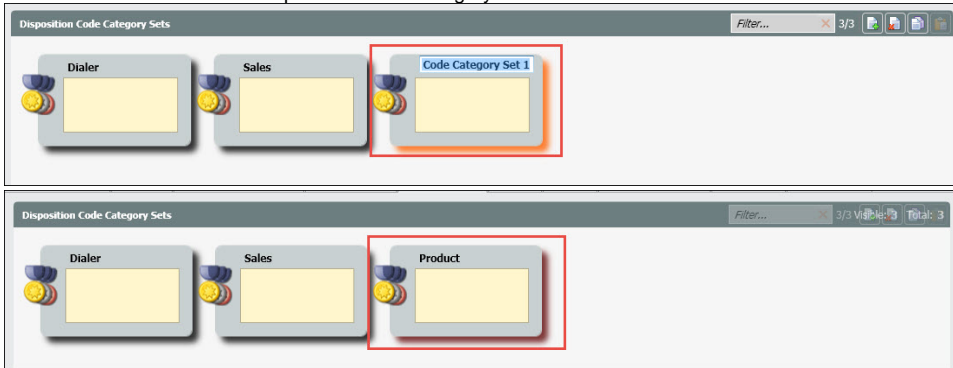


Adding a New Disposition Code Set

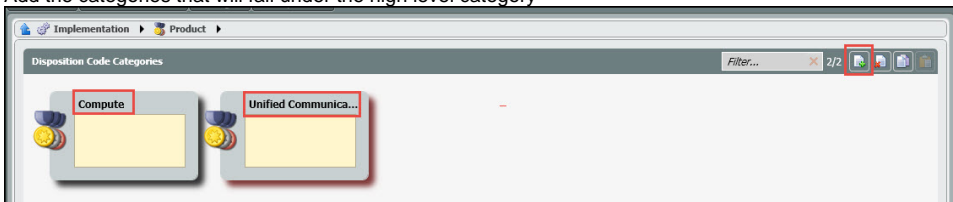
1. Click on the Add New icon to add a new Disposition Code Category set



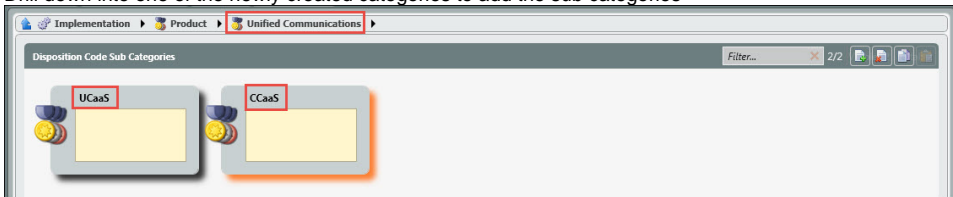
2. Enter in a name for the new Disposition Code Category Set



3. Drill Down into the new Category Set
4. Add the categories that will fall under the high level category



5. Drill down into one of the newly created categories to add the sub categories



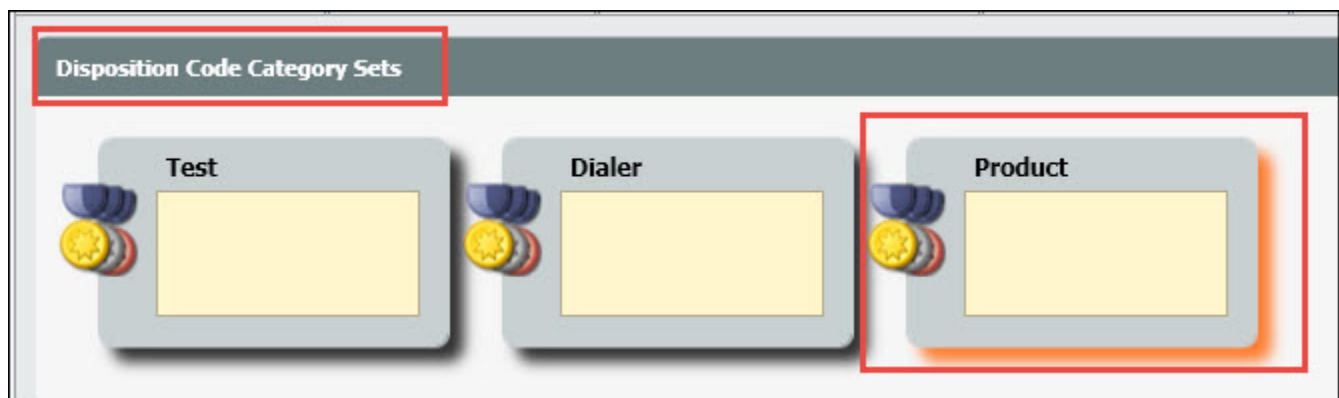
6. Once the sub categories have been created, drill into a sub-category to begin adding the appropriate disposition codes.

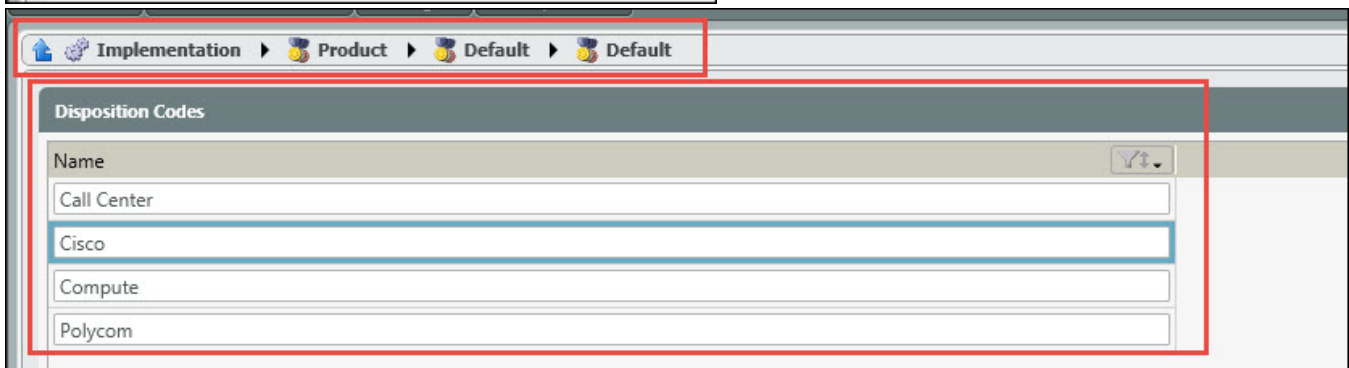
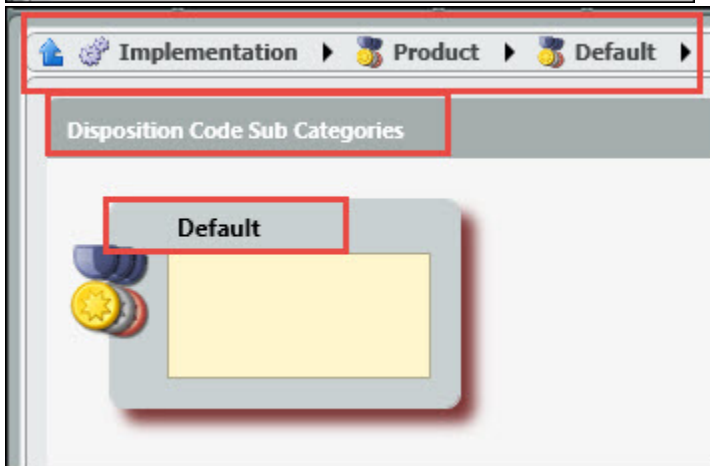
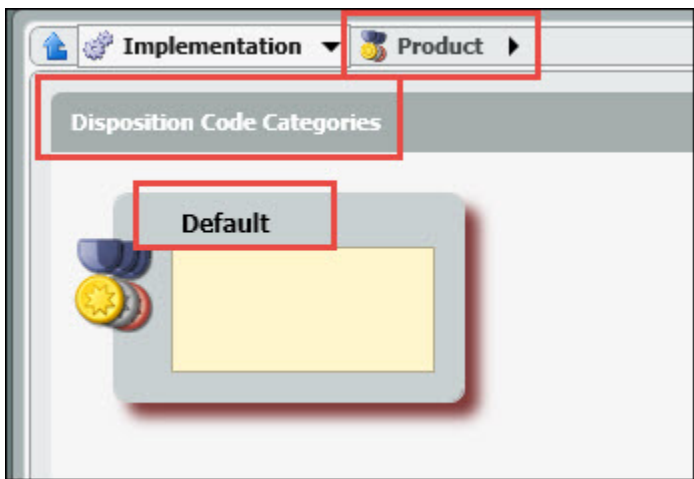


7. Deploy Changes

Note: If you do not wish to have any sub-categories, simply create the high level disposition category, with a single sub category and add the disposition codes.

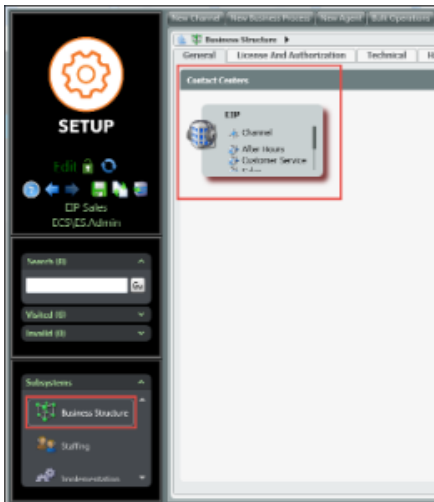
Example:



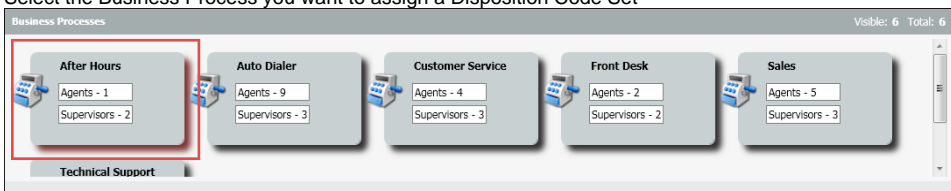


Adding a Disposition Code Set to a Business Process

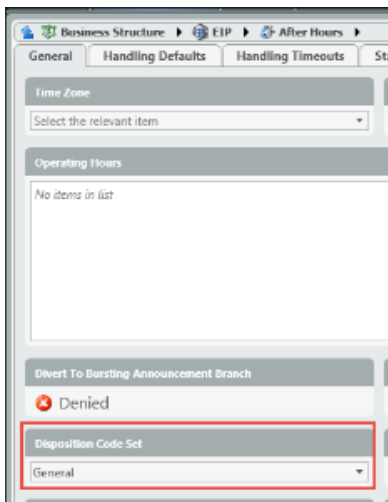
1. Under Subsystems, select Business Structure and Drill down into the Business Structure Contact Center.



- 2.
3. Select the Business Process you want to assign a Disposition Code Set

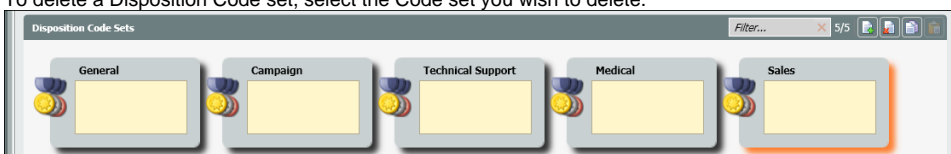


4. Under the General Tab, locate the Disposition Code Set option and from the drop down, select the Disposition Code Set for the Business Process.

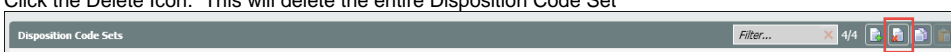


Deleting a Disposition Code Set or Code

1. To delete a Disposition Code set, select the Code set you wish to delete.

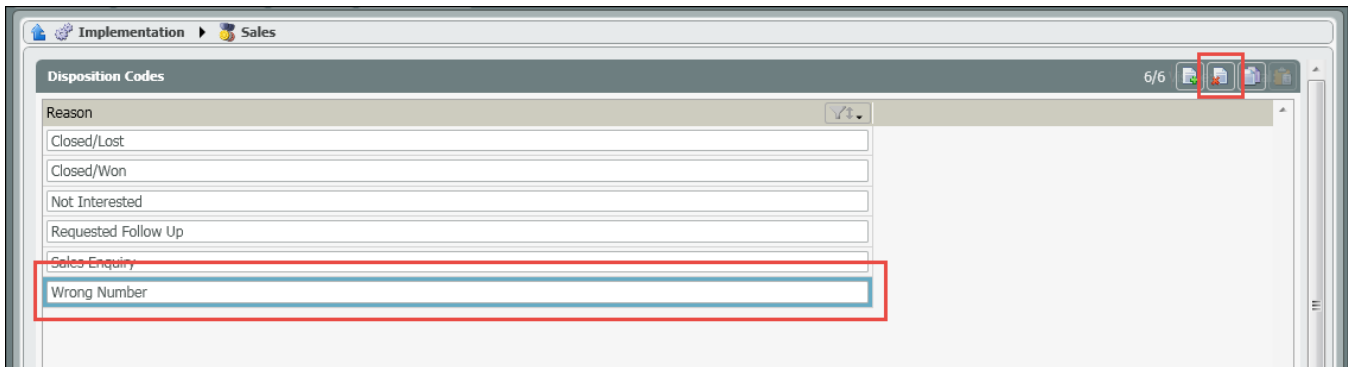


2. Click the Delete Icon. This will delete the entire Disposition Code Set



OR

1. To Delete an individual disposition code within a set, drill down into the disposition code set.
2. Select the disposition code you wish to delete and click the delete icon. This will delete the disposition code from the set.



Making Dispositions Mandatory

Disposition codes can be made mandatory by enabling the following settings at the business process level.

1. At the business process handling defaults, enable "Disposition Codes Mandatory".

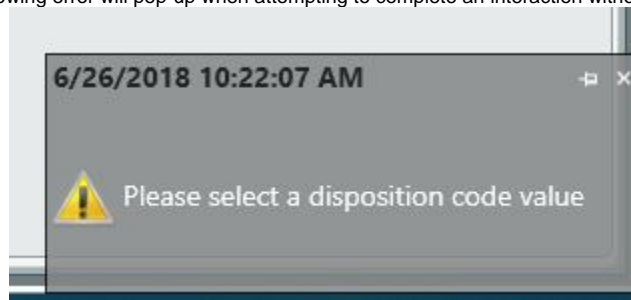
Disposition Code Mandatory

☒ Yes

- When a disposition code is mandatory it will have a red background.

Disposition Code ▼

- The following error will pop-up when attempting to complete an interaction without a disposition code assigned.



2. You can further configure the disposition code set (instructions above) and the disposition code timeout (Handling Timeouts > Enforce Disposition Code – Timeout) in minutes.
3. The Disposition Code Timeout will set a time limit on when the interaction will no longer require a disposition code to complete.

NOTE: A global setting can be applied across all Business Processes that establishes a timeout parameter when an interaction will be automatically closed if a Disposition Code isn't selected. This setting can be found on the Handling Timeouts tab of the Business Structure.

[blocked URL](#)

In the "Enforce Disposition Code - Timeout" field, enter the number of minutes that agents are allowed to enter a Disposition Code before the system closes their interaction.

Agent View

When using multi-level Disposition Codes the agent will be able to select from the different Categories and Sub Categories within the client. The Sub Category and Disposition Code will populate based on the previous selection by the agent. If the agent knows the Disposition Code to assign to the interaction, they can select it without selecting a Category or Sub Category first. Once the Disposition Code is selected, the Category and Sub Category will automatically populate.

- 1 - Select a Category

[blocked URL](#)

- 2 - Select a Sub Category

[blocked URL](#)

- 3 - Select a Disposition Code

[blocked URL](#)

blocked URL